



LAZY LOUNGE CHAIR

Lazy lounge chair Residence (CZM5421) - Lazy lounge chair Farmhouse (CZM5422) - Lazy lounge chair Mansion (CZM5424) - Lazy lounge chair Lobby (CZM5425) - Lazy lounge chair Royal velvet Espresso (CZM5426) - Lazy lounge chair Corduroy rib Brown (CZM5428)

General specifications

Dimensions:

105x105x75 cm
Seat height: 40 cm
Seat depth: 56 cm

Material composition

Colour cushions:

Residence
Farmhouse
Mansion
Lobby
Royal velvet Espresso
Corduroy rib Brown

Filling:

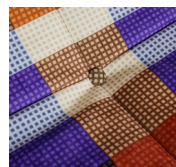
- Body: SG35 foam
- Seat filling: SG35 foam with top layer SG25 soft foam + dacron 400 m/g
- Back filling: SG35 foam with top layer SG25 soft foam + dacron 400 m/g



Corduroy rib
Brown



Residence



Farmhouse



Mansion



Lobby



Royal velvet
Espresso

Fabric specifications print fabrics:

- Covering composition: 100% Polyester
- Product weight: 460 g/m³
- Abrasion resistance: 80.000 cycles, martindale
- Pilling resistance: (EN ISO 21945-2) Class 4-5, 2.000 Rubs
- Flammability: (BS EN 1021-1:2006 Cigarette)
- Colour fastness to light: class 5

Fabric specifications corduroy rib fabric:

- Covering composition: 92% Polyester, 8% Nylon
- Product weight: 300 g/m³
- Abrasion resistance: 40.000 cycles, martindale
- Pilling resistance: (EN ISO 21945-2) Class 4, 2.000 Rubs
- Flammability: (BS EN 1021-1:2006 Cigarette)
- Colour fastness to light: class 4

Fabric specifications lobby fabric:

- Covering composition: 100% Polyester
- Product weight: 460 g/m³
- Abrasion resistance: 45.000 cycles, martindale
- Pilling resistance: (EN ISO 21945-2) Class 5, 2.000 Rubs
- Flammability: (BS EN 1021-1:2006 Cigarette)
- Colour fastness to light: class 6

Fabric specifications royal velvet fabric:

- Covering composition: 100% Polyester
- Material weight: 518 g/lm
- Abrasion resistance: 40.000 cycles, Martindale
- Pilling resistance (EN ISO 12945-2): Class 4-5
- Flammability: (BS EN 1021-1:2006 Cigarette)
- Lightfastness (EN ISO B02): Class 4-5



Care instructions Lazy lounge chair:

Wash with a soft cloth and a mixture of a mild detergent and warm water. Rinse with warm water, and wipe dry with a clean, soft cloth. Do not use abrasive, acid, alcohol-based, or solvent-based cleaners; they will damage the surface and cause the metal to erode. Wipe up immediately using a clean, soft cloth. Avoid sharp objects.